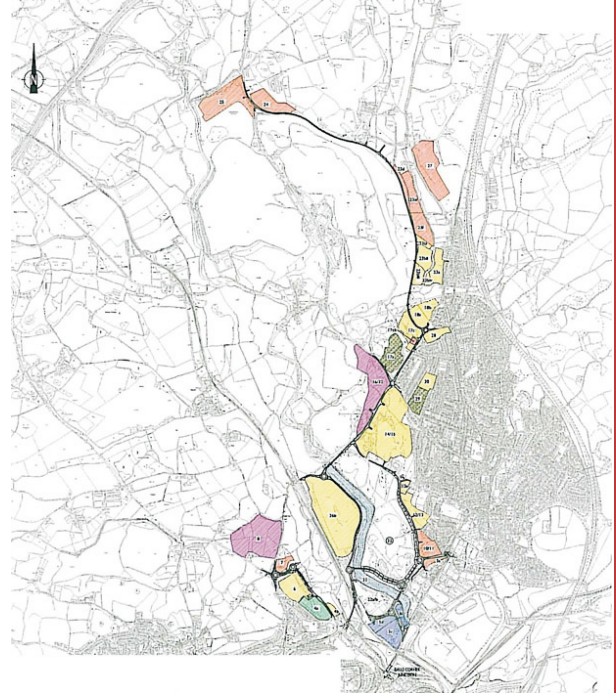


Kingsteignton and Newton Abbot South Devon

SMA has been engaged by WBB Minerals to advise upon the engineering and technical aspects of restoring former ball clay quarries and enabling the land to facilitate new development.

SMA has been instrumental in securing planning consents for housing, sports and commercial sites, trunk road services area including hotel and restaurants, and is currently engaged in the preparation of further planning applications for circa 1000 dwellings, retail and commercial sites. Key to those schemes has been SMA's input to the major transport and flood risk assessments and the preliminary highways and civils design to overcome congestion, environmental and flood risk constraints.



SMA provide the following services

- Transportation
- Infrastructure
- Civil Engineering
- Structures
- Water and Environment
- Project Management